

# Easter & Holy Week 2021

## at Avondale Presbyterian Church

### Palm Sunday

**Sunday, March 28**

Join us on Palm Sunday at 9:30 AM for our *Worship service*, broadcast on our [YouTube channel](#). We invite you to make *Easter Gifts* in honor of and in memory of loved ones. Details are [on our website](#). We will have our *Ten Cents-A-Meal* offering. At 12 PM in the Sacred Garden, we will have an *Egg Hunt* for the little ones! Please bring your Easter basket! A picnic is welcome also.



### Good Friday

**Friday, April 2**

Take a walk, Receive the bread of life, and Give the gift of life! Our *Stations of the Cross* event will continue on Friday from 10 AM - 7 PM. In addition, on the day of Christ's crucifixion, Avondale is hosting a life giving event- *a blood drive*! [Sign-up to donate](#) between 10 AM - 2:30 PM in the FLC. *Communion* will be served in the Sacred Garden during the time of the blood drive.



### Easter

**Sunday, April 4**

Join us at 9:30 AM for our *Easter Service* broadcast on our [YouTube channel](#). At 11:30 AM and 1 PM, we are excited to share the opportunity for an in-person, outdoor *Easter Meditation Service* and *Flowering of the Cross* in the Sacred Garden! Please bring a chair or blanket for seating, flowers you want to place on the cross, and face coverings. [Sign-up is required](#). We will also have an Easter Brunch at 12 PM. Find more information on our website. As we look forward to The Promise of Easter, consider an *Easter gift* to Avondale. Details are on [our website](#).

### Maundy Thursday

**Thursday, April 1**

We invite you to drop-in for a *Stations of the Cross* event, held in the Sacred Garden. Journey to the cross with Christ, using scripture readings, confessions and prayer. The stations will be available from 10 AM - 7 PM. For all ages.

Join us for *Communion in the garden*, served from 12-1 PM and 6-7 PM.

At 7 PM, quiet your mind and join in for a *Taizé prayer service* shared on our [YouTube channel](#).

### Holy Saturday

**Saturday, April 3**

Come! Be a "Pilgrim," a religious traveler on a journey, spending time reflecting on Jesus' journey and your own. Drop-in to *walk our garden and labyrinth* from 2 - 4 PM. A guide will be available to teach about the labyrinth and how to walk it. Avondale's labyrinth is a sacred path. A path that holds the spiritual and prayerful steps of many in our community.



ASH WEDNESDAY  
FEBRUARY 17



2021  
EASTER - APRIL 4

HOLY WEEK  
SEE OUR WEBSITE



## *Holy Week*

March 28-April 3, 2021

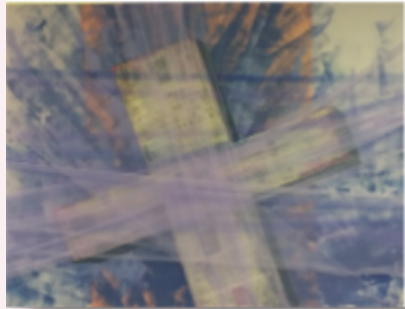
- Palm Sunday**  
March 28 **Worship Service** - 9:30 AM, broadcast  
Ten Cents-A-Meal; Easter Gifts given to the Glory of God  
**Egg Hunt** - 12 PM in the Sacred Garden (bring basket, picnic welcome too)
- Maundy Thursday**  
April 1 **Communion** - in person, Sacred Garden, 12-1 PM and 6-7 PM  
**Stations of the Cross** - 10 AM-7 PM, Sacred Garden  
**Taizé Prayer Service** - 7 PM, broadcast
- Good Friday**  
April 2 **Stations of the Cross** - 10 AM-7 PM, Sacred Garden  
**Communion** - in person, Sacred Garden, 10 AM-2:30 PM  
**Good Friday Blood Drive** - 10 AM-2:30 PM, Family Life Center, [sign-up](#)
- Holy Saturday**  
April 3 **Reflective Walking in the Sacred Garden** - 2 - 4 PM  
Walk the Labyrinth; a guide will be available

## *Easter*

April 4, 2021

- Easter Service** - 9:30 AM, broadcast  
April 4 **Easter Services in the Garden** - 11:30 AM at 1 PM brief in-person service, [sign-up to attend](#); 50 person limit\*; bring flowers to Flower the Cross; please bring your own chair/blanket; limited chairs available to seniors  
**Easter Brunch** - 12-1 PM, find food and fellowship between services  
**Flowering of the Cross** - beginning at 11:30 AM service, Sacred Garden  
**Sharing of Easter Gifts**

STATIONS OF THE CROSS  
APRIL 1-2 IN GARDEN



TWO SERVICES ON  
EASTER / APRIL 4

HOLY WEEK  
SEE WEBSITE FOR DETAILS



## *Stations of the Cross*

### **About Stations of the Cross**

April 1 & 2 10 AM-7 PM, Maundy Thursday & Good Friday; Sacred Garden  
Journey to the cross with Christ, using scripture readings, confessions and prayer. For the whole family. [link](#)

## *Good Friday Blood Drive*

### **About the Blood Drive**

April 2 from 10 AM -2:30 PM; Sign-up via [link](#) or see our website  
On the day of Christ's crucifixion, Avondale is hosting a life giving event- a blood drive. Setup for social distancing, the drive will be in the Family Life Center. You can donate whether you have or have not had the vaccine. Youth ages 16 and up are allowed to donate with parental consent. [Volunteer to Greet](#)

## *Reflective Walking on Holy Saturday*

### **About the Sacred Garden Labyrinth Walk**

2-4 PM; Walk the Labyrinth; guide available

April 3 Avondale's labyrinth is a sacred path. A path that holds the spiritual and prayerful steps of many in our community. We invite you to drop-in. A guide will be here to teach about our labyrinth and the traditional ways in which to walk it. Come be a "Pilgrim," a religious traveler on a journey, spending time reflecting on Jesus' journey and your own.

## *Easter Brunch & Easter Offerings*

### **About Easter Brunch**

April 4 Light refreshments will be served on Easter from 12-1 PM, between our two services in the Sacred Garden. Stay after service or come early...we hope you will join us to enjoy food and fellowship together!

### **About Easter Gifts**

March 21-29 As we look forward to The Promise of Easter, please consider an Easter gift to Avondale. If you would like to participate by honoring or remembering your loved ones or special friends, there are two giving opportunities:

- **Facilities Fund and One Great Hour of Sharing**
- Share your gifts by Monday, March 29; your Memorials & Honorariums will be shared on Easter day; [details, forms, and giving](#)





Remembering loved ones who reside within the church triumphant is natural on Easter Day. This year, as with years past, there are opportunities to honor or remember loved ones by supporting a particular mission or project.

### *Avondale Facilities Fund*

We invite you to make a contribution in memory and honor of loved ones. Gifts will help replenish our Facilities Fund which is used for capital improvements of our church property. We thank God for the many mission opportunities provided by our property and facilities.

### *One Great Hour of Sharing*

A gift to One Great Hour of Sharing enables the church to share God's love with our neighbors in need around the world by providing relief to those affected by natural disasters, providing food to the hungry, and helping empower the poor and oppressed.

*Restoring Hope, Feeding the Hungry,  
Empowering the Oppressed*



**Click here  
to give**



Gifts due by/on Monday, March 29 to be included in the Easter Gifts publication.